

# Alumicor™

BUILDING EXCELLENCE

Now more options!  
(see back)



## UniVent 1350

Versatile Projecting Operable Insert



Catalogue Pages



Specifications



CAD details

[www.alumicor.com](http://www.alumicor.com)



# UniVent 1350

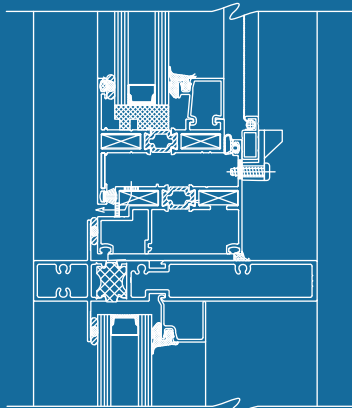
Versatile Projecting Operable Insert



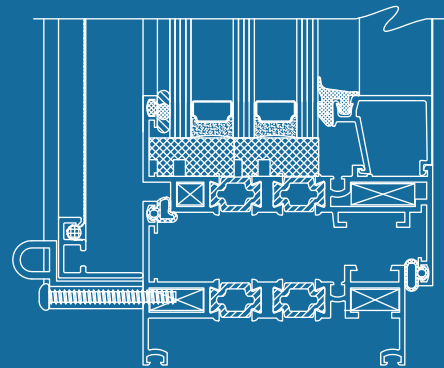
## Features & Benefits

- **NEW!** Multipoint locking for 60" or larger open out casements
- **NEW!** Accommodates double & triple glazing applications
- Frame depth of 2 11/16" (68.3mm)
- Available in casement, awning and hopper
- Ideal for use in curtain wall and fixed window systems

- Thermally broken, accommodates 1" (25.4mm) insulating glass units (IGU) or 1 3/4" glass for triple glazing
- Polyamide port-hole thermal break permits two colour interior / exterior finishes
- Variety of operating hardware options
- Factory fabricated at Alumicor facilities only
- Air and water tested; NAFS 08 Class CW-PG70

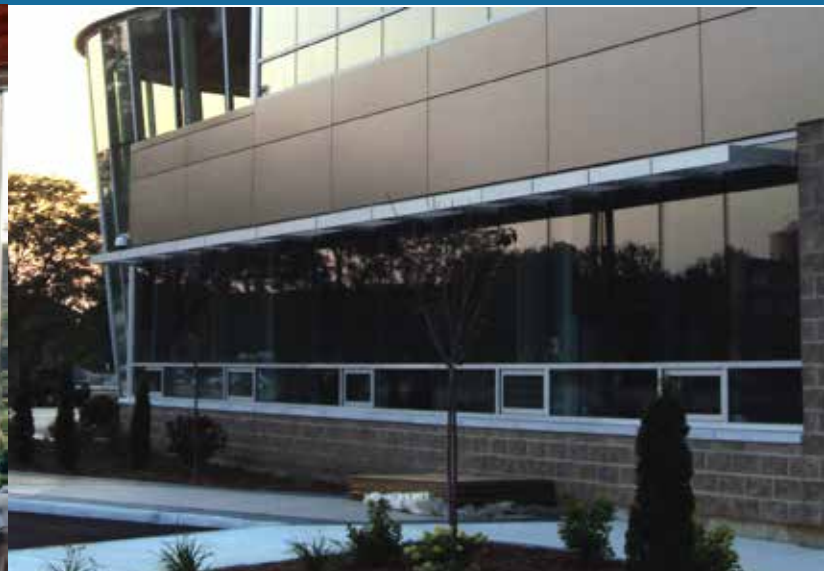


Double glazed open out



Triple glazed open in

**Note:** the 1350 capabilities have been expanded to include those formerly offered with the 1400, making the product choice easier and simpler for architects and dealers



### Alumicor West

Winnipeg  
800-665-3635

Langley  
877-289-4171

### Alumicor Central

Toronto  
877-258-6426

### Alumicor East

Montreal  
866-586-4267

Halifax  
888-346-5151