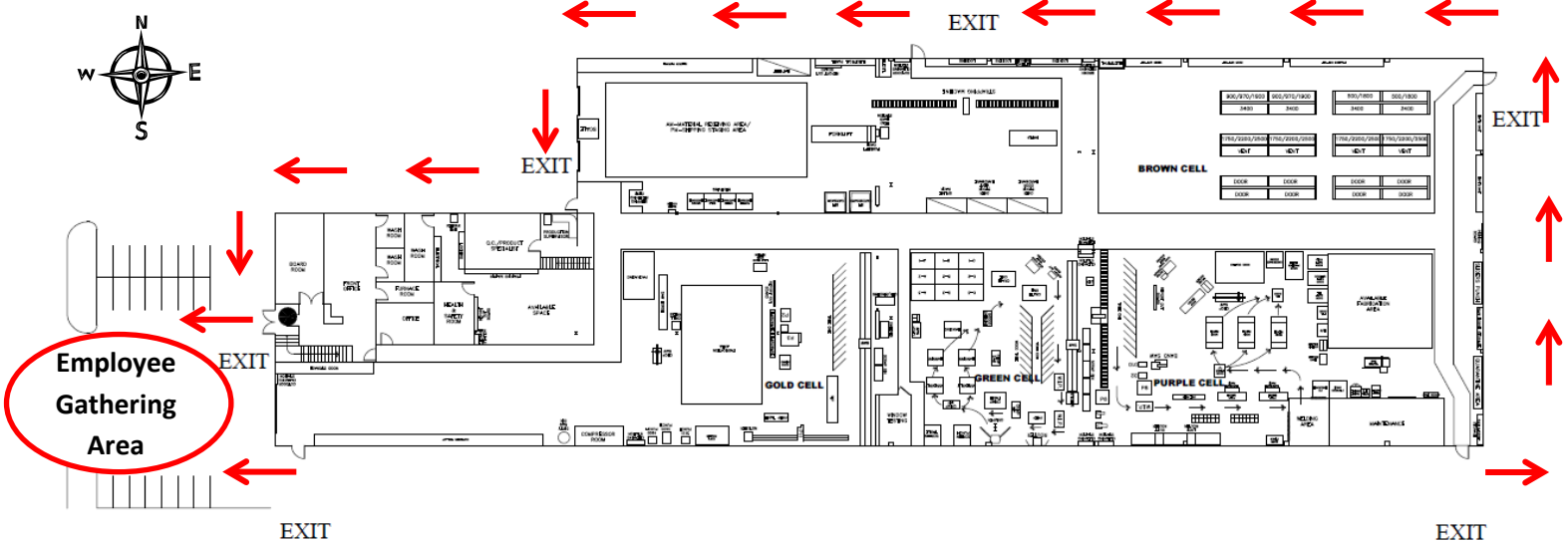


EMERGENCY EVACUATION MAP

205 Hutchings St (not to scale)



VISITORS must report to reception to sign-in and to sign-out upon leaving.

EMPLOYEES AND VISITORS: EVACUATION UPON HEARING THE ALARM

1. LEAVE the building immediately through the nearest exit when the alarm sounds and follow practiced evacuation procedures.
2. Please **PRIORITIZE EVACUATION** if necessary – people requiring assistance will be evacuated first.
3. **QUICKLY** move outside to the Alumicor **EMERGENCY MEETING LOCATION** as indicated above.
4. **BRING** any **GUESTS** with you outside. Do not attempt to retrieve cell phones or any items located elsewhere before leaving the building.
5. **DO NOT** leave company grounds. You will need to be accounted for at all times. Do not head home.
6. **DO NOT** go back in the building for any reason, unless the “ALL CLEAR” is given by the **ALUMICOR Fire Marshall**.

YOUR SAFETY IS OF THE UTMOST IMPORTANCE. PLEASE TAKE FIRE DRILLS SERIOUSLY.